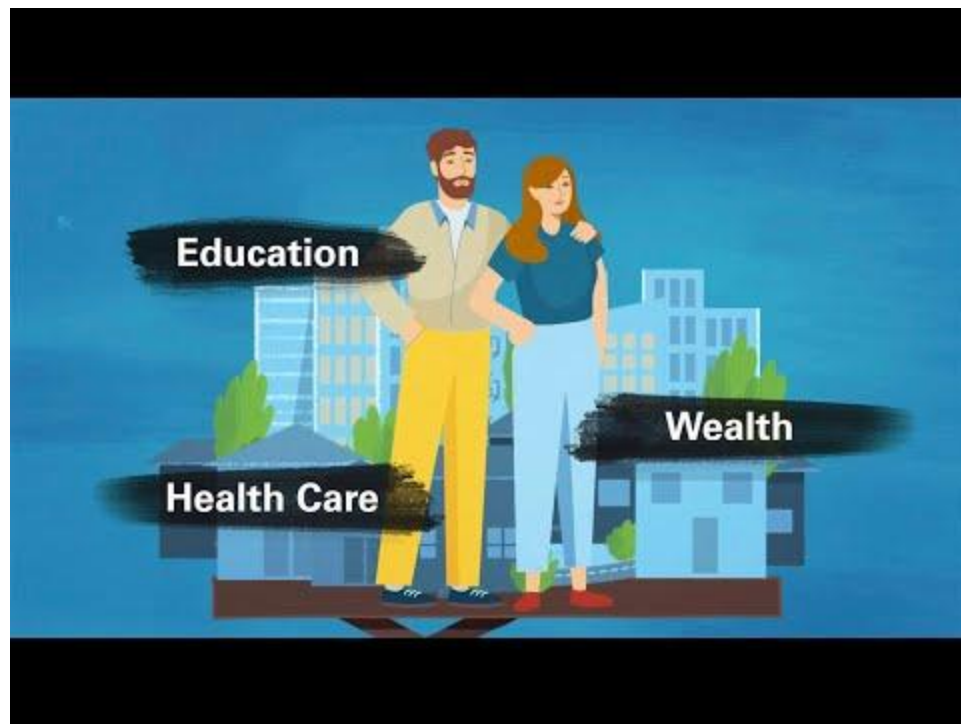




MATTHEW 25



STRUCTURAL RACISM

Racism in the U.S. is a socially constructed system.



MATTHEW 25

Similar with Systemic Poverty, Structure Racism are laws, policies, and practices that continually disenfranchise people of color.

STRUCTURAL RACISM LOOKS LIKE...

- **Housing discrimination** that limits where people of color can live and steers them to rental markets rather than home ownership.
- **Laws and policies** that deny people of color access to quality education, employment and adequate health care.
- **Food apartheid** — areas deliberately devoid of quality, affordable fresh food.
- **Environmental racism** — the dumping of hazardous waste, inadequate infrastructure, and lack of access to clean water that results in a range of serious health problems in communities of color.

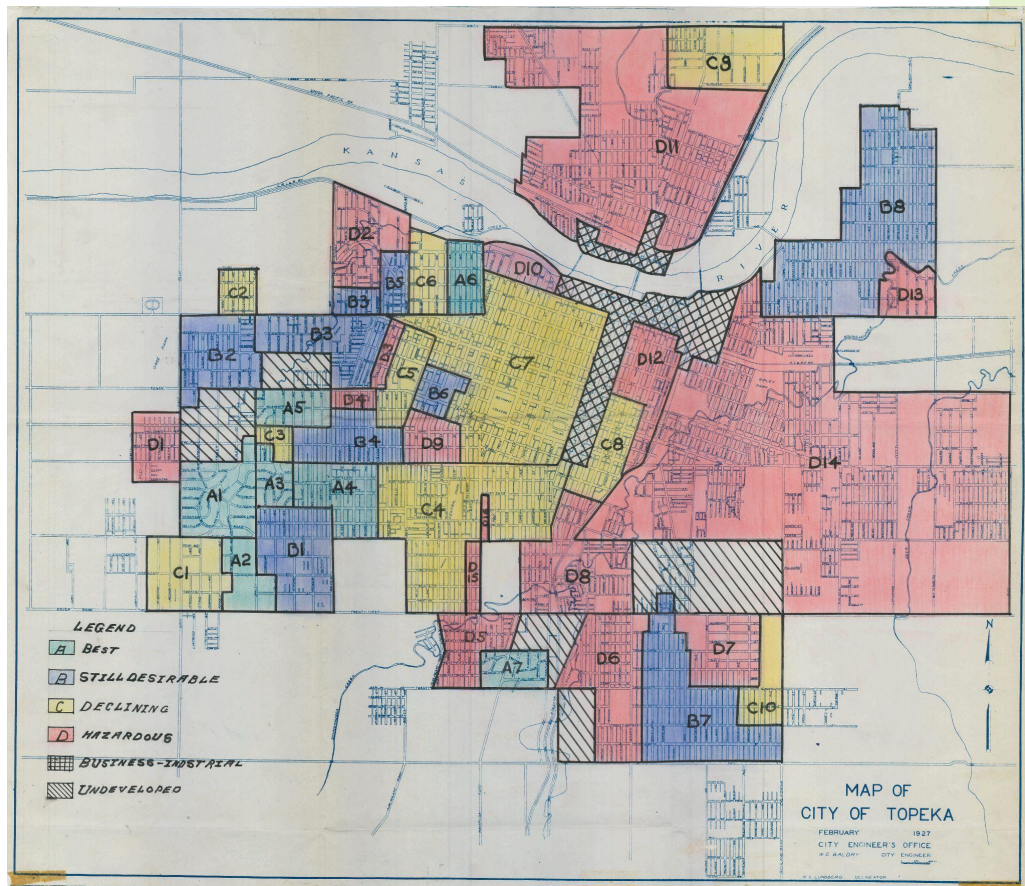
POVERTY IN TOPEKA, KANSAS



- In Downtown Topeka, median household income is **\$17,130.**
- In Southwest Topeka, median household income is **\$89,842.**
- In Topeka, median household income is **\$40,342.**

REDLINING IN TOPEKA

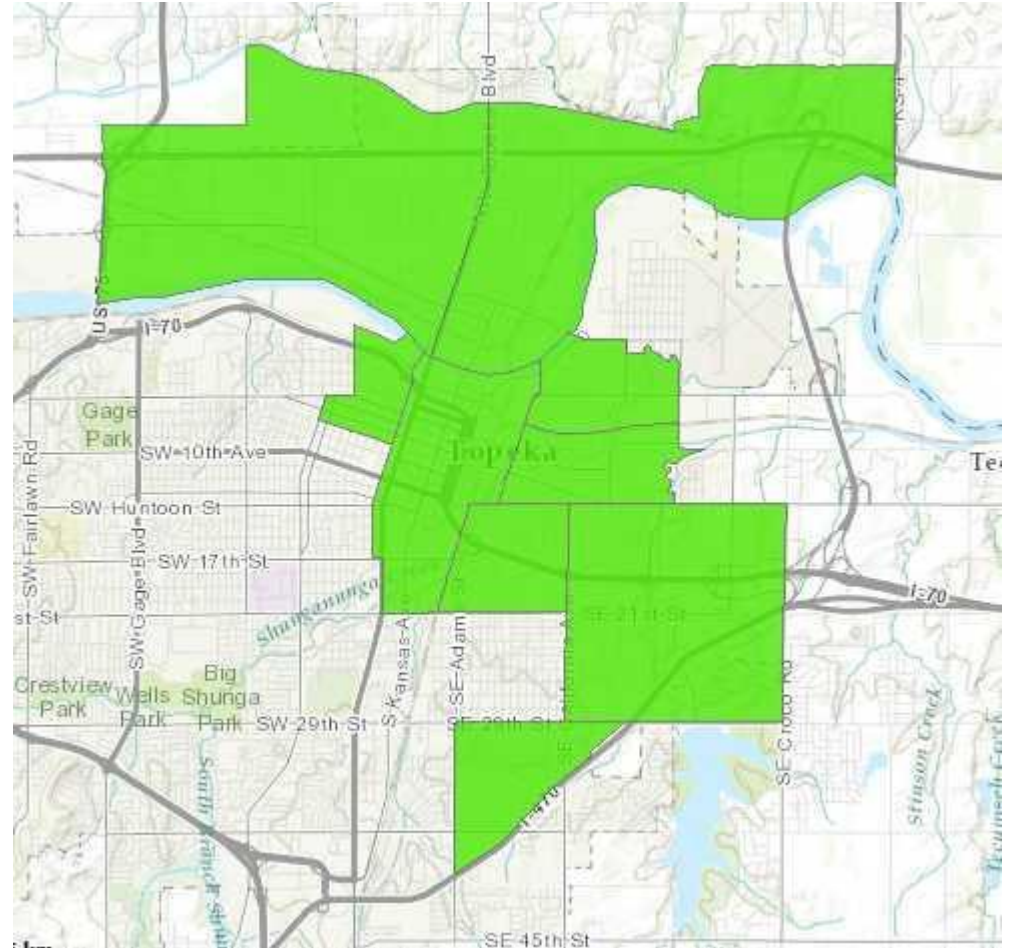
Topeka, 1940

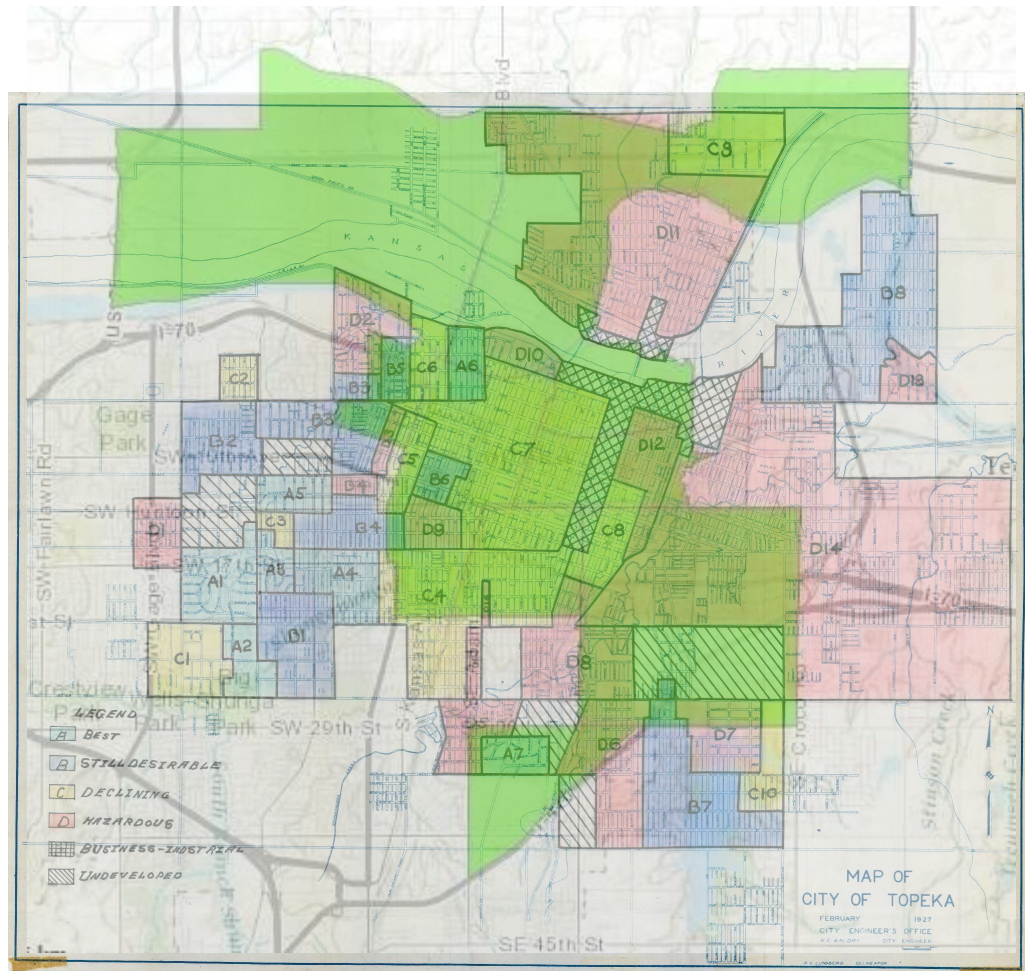


HEW 25

FOOD APARTHEID

Map of Food deserts
in Topeka.





RACISM IS ANTI-CHRISTIAN



Racism is a lie about our fellow human beings, for it says that some are less than others. It is also a lie about God, for it falsely claims that God favors parts of creation over the entirety of creation. Because of our biblical understanding of who God is and what God intends for humanity, the PC(USA) must stand against, speak against and work against racism. **Anti-racist effort is not optional for Christians. It is an essential aspect of Christian discipleship, without which we fail to proclaim the Good News of Jesus Christ.**

(2016 Statement from the PC(USA) General Assembly.

FROM THE CONFESSION OF THE BELHAR

“any teaching which attempts to legitimate such forced separation by appeal to the gospel, and is not prepared to venture on the road of obedience and reconciliation, but rather, out of prejudice, fear, selfishness and unbelief, denies in advance the reconciling power of the gospel, must be considered ideology and false doctrine.

BIBLICAL FOUNDATIONS FOR ANTI-RACISM

So now you are no longer strangers and aliens. Rather, you are fellow citizens with God's people, and you belong to God's household.



Ephesians 2: 19

WHAT CAN WE DO?

- **Learn**
- **Listen**
- **Act**

LEARN ABOUT STRUCTURAL RACISM

- 21 Day Racial Justice Challenge

<https://www.presbyterianmission.org/ministries/matthew-25/racism/>

- Contact the Topeka Shawnee County Public Library and ask for resources about racism.



LEARN HOW THE CHURCH HAS RESPONDED

- Read and study the Confession of the Belhar and the Confession of 1967.
- Visit the PCUSA Racial Ethnic and Women's Ministries websites.



Presbyterian Church (U.S.A.)
Presbyterian Mission

LISTEN

- Listen to Black, Indigenous, Persons of Color (BIPOC)
- **Listen from a place of curiosity and humility.**



ACT

- Join the **Mission** or **Peacemaking Committees.**

-

DONATE

- **Money** and **Time** are the two biggest resources needed to dismantle structural racism.

www.trinitypresbyterian.net/give



SELF-ASSESSMENT

In what ways have you experienced racism directly or indirectly in your life?

Through your observation and/or experience, how do you think the church has handled such issue of racism in society and also in the church?



MATTHEW 25

“The Spirit justifies us by grace through faith, sets us free to accept ourselves and to love God and neighbor, and binds us together with all believers in the one body of Christ, the Church”



MATTHEW 25